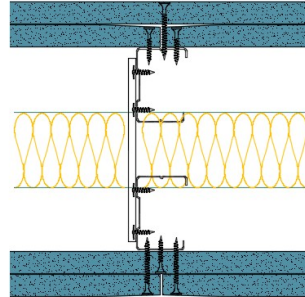


TWC50-B-60(50)(200) - SPEEDLINE System Data Sheet - Version V1 (24-10-23)

Twin SPEEDLINE 50mm 'C' Stud Partition @600mm
Ctrs, with 2x BG Gyproc 15mm SoundBloc each
side, 50mm APR



System Performance Breakdown

Fire Resistance:

BS476 Part 22:1987:

Test Ref & Date or Applied Ref & Report:

Max Height:

Thickness:

Duty Grade: BS 5234: Part 2:1992:

Sound Insulation:

90/90 Minutes (Integrity/Insulation).

BTC 17440F - BRE Report P102396-1011A

Refer to Speedline Specification Clause

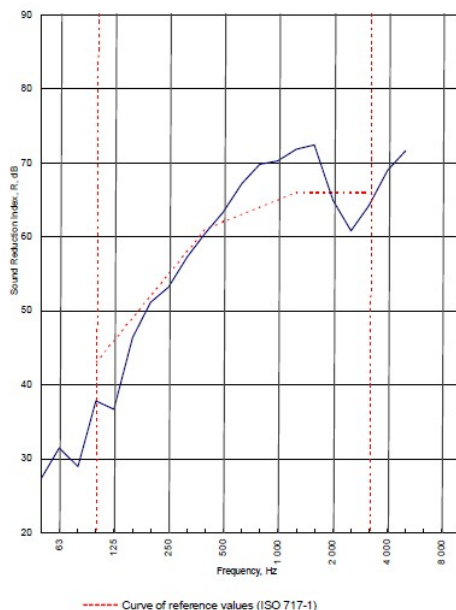
200 mm. (At Base Track, Excluding Finishes)

Severe - Annexes A-F

62 R_w dB, -9Ctr Date Tested or Assessed Against - 30/11/2012

Test Code:
H18042AA
Test Date:
30/11/2012

Freq. Hz	R dB
50	27.4
63	31.5
80	29.0
100	37.8
125	36.7
160	46.4
200	51.2
250	53.2
315	57.3
400	60.5
500	63.3
630	67.2
800	69.8
1 000	70.3
1 250	71.9
1 600	72.4
2 000	64.9
2 500	60.8
3 150	64.2
4 000	69.0
5 000	71.6
6 300	
8 000	
10 000	



Rating according to BS EN ISO 717-1:1997
Evaluation based on laboratory measurement results obtained by an engineering method.

R_w (C;Ctr) = 62 (-3;-9) dB
Max dev. 9.3 dB at 125 Hz

C_{50-100} = -6 dB	$C_{50-1000}$ = -5 dB	$C_{100-5000}$ = -2 dB
C_{80-100} = -16 dB	$C_{80-1000}$ = -16 dB	$C_{80-10000}$ = -9 dB

TESTED AT ONE OF THE UKAS ACCREDITED LABORATORIES BELOW

- B.T.C (H-Ref on Graph)
- B.R.E
- AIRO
- S.R.L

Customer: Metsec plc Hepsec Division



BTC 18042A: Page 9 of 11